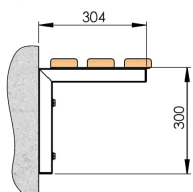
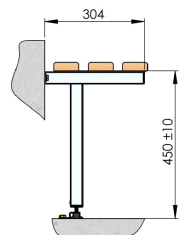


# Bench Seating Sales Selector Chart

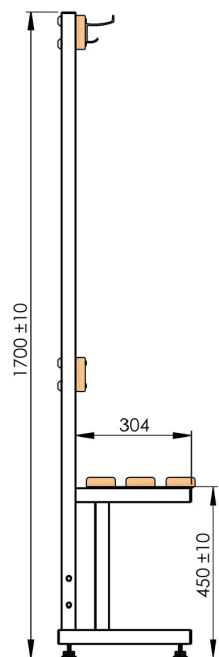
Choose the relevant frame below and follow the flow chart



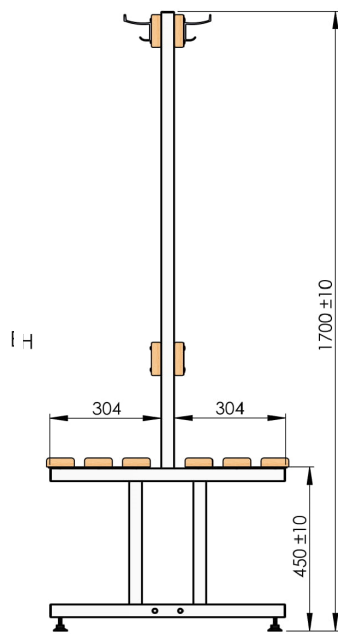
BSF01-CANTILEVER BENCH



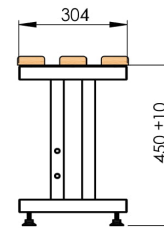
BSF02 - WALL MOUNT BENCH



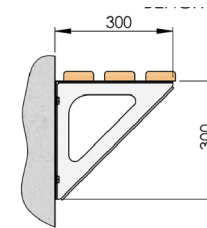
BSF03-SINGLE ISLAND BENCH



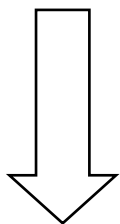
BSF04-DOUBLE ISLAND BENCH



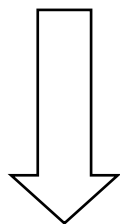
BSF05-SINGLE BENCH



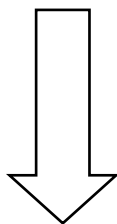
BSF06-CANTILEVER BENCH  
(Stainless Steel)



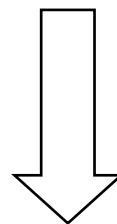
Go To Page 2



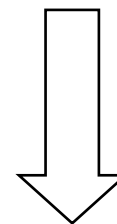
Go To Page 3



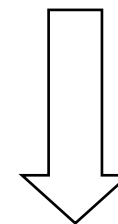
Go To Page 4



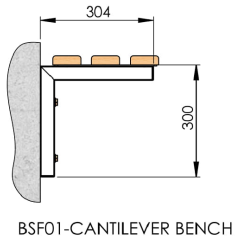
Go To Page 5



Go To Page 6



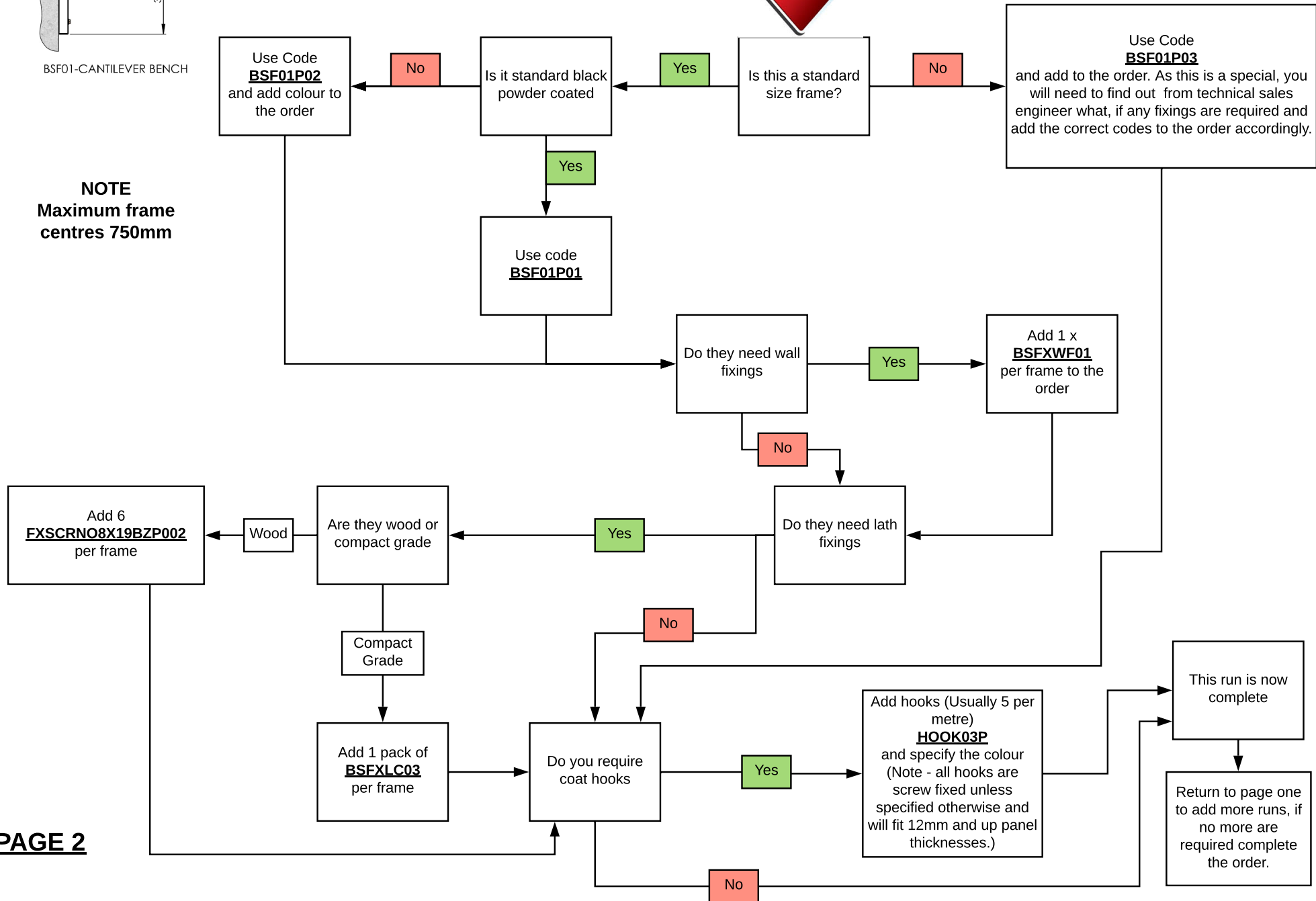
Go To Page 7

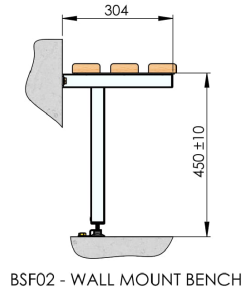


# BSF01 Cantilever Frame

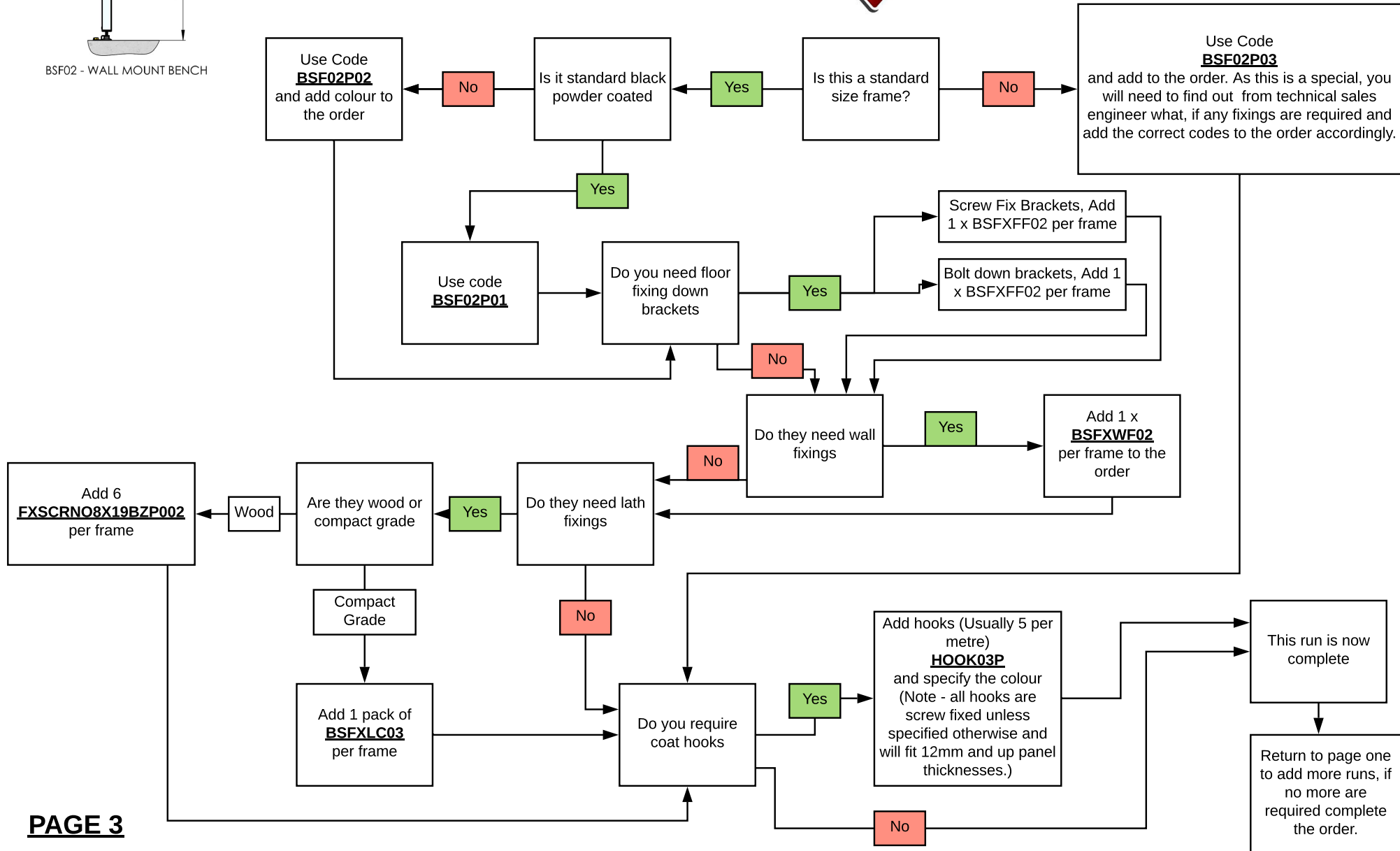


**NOTE**  
Maximum frame  
centres 750mm



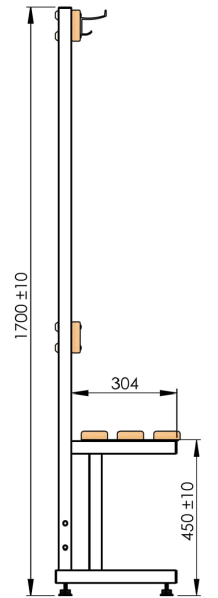


## BSF02 Wall Mount Frame



# BSF03 Single Island Frame

Using the ALM Bench Seating Calculator shown below and available as a download from a member of our sales team, work out the required number of frames per run and also the tie bar lengths. NOTE - this will only work with our standard layouts as shown in the below image.



BSF03-SINGLE ISLAND BENCH

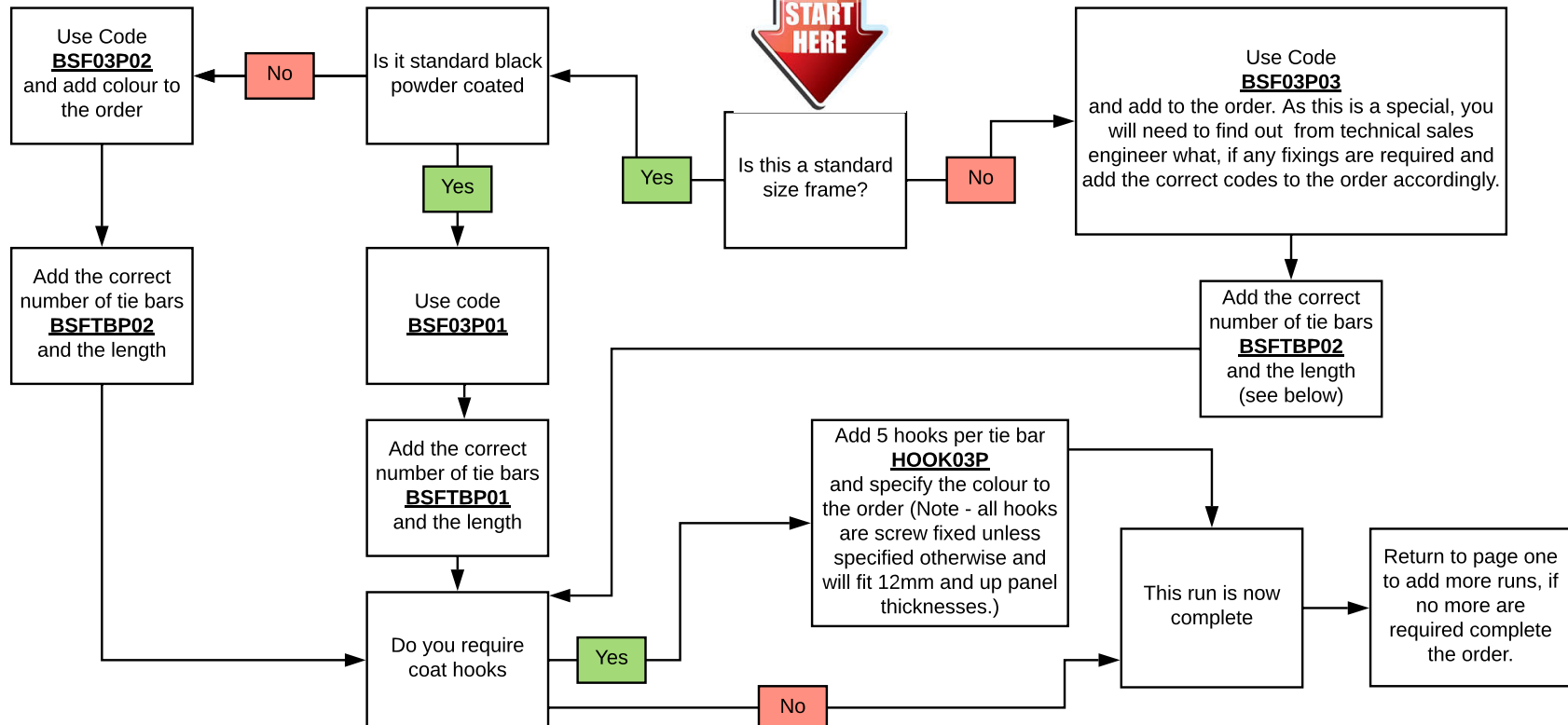
**alm products ltd.**

Enter Bench Length Below (mm)

1000

Frames Required	Tie Bars Required	Tie Bar Length
2	1	712 mm

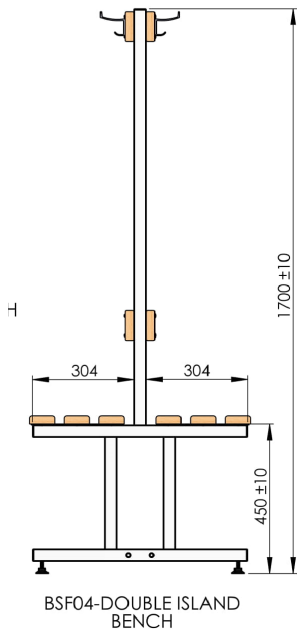
E-mail: [sales@alm1.co.uk](mailto:sales@alm1.co.uk) Tel: 01325 313377 [www.almproducts.co.uk](http://www.almproducts.co.uk)



**NOTE - These frames are supplied with fixing down brackets and floor anchors along with all the required screws and bolts to assemble/install complete on site.**

# BSF04 Double Island Frame

Using the ALM Bench Seating Calculator shown below and available as a download from a member of our sales team, work out the required number of frames per run and also the tie bar lengths. NOTE - this will only work with our standard layouts as shown in the below image.





---

Enter Bench Length Below (mm)

1000

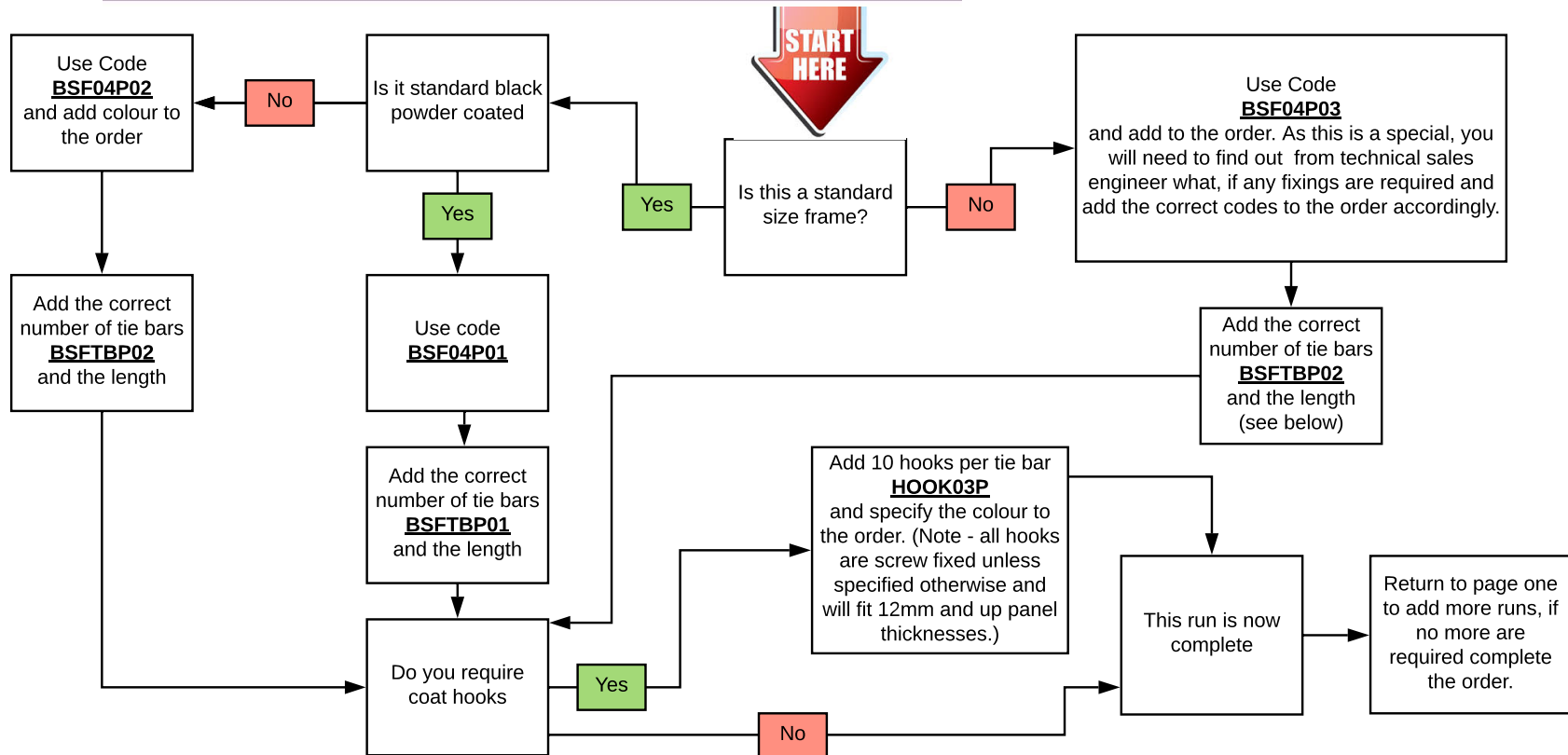
Frames Required	Tie Bars Required	Tie Bar Length
2	1	712 mm



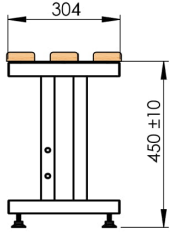
E-mail: [sales@alm1.co.uk](mailto:sales@alm1.co.uk) Tel: 01325 313377 [www.almproducts.co.uk](http://www.almproducts.co.uk)

**NOTE - These frames are supplied with fixing down brackets and floor anchors along with all the required screws and bolts to assemble/install complete on site.**

**PAGE 5**



# BSF05 Single Bench Frame



BSF05-SINGLE BENCH

Using the ALM Bench Seating Calculator shown below and available as a download from a member of our sales team, work out the required number of frames per run and also the tie bar lengths. NOTE - this will only work with our standard layouts as shown in the below image.

**alm products ltd.**

---

Enter Bench Length Below (mm)

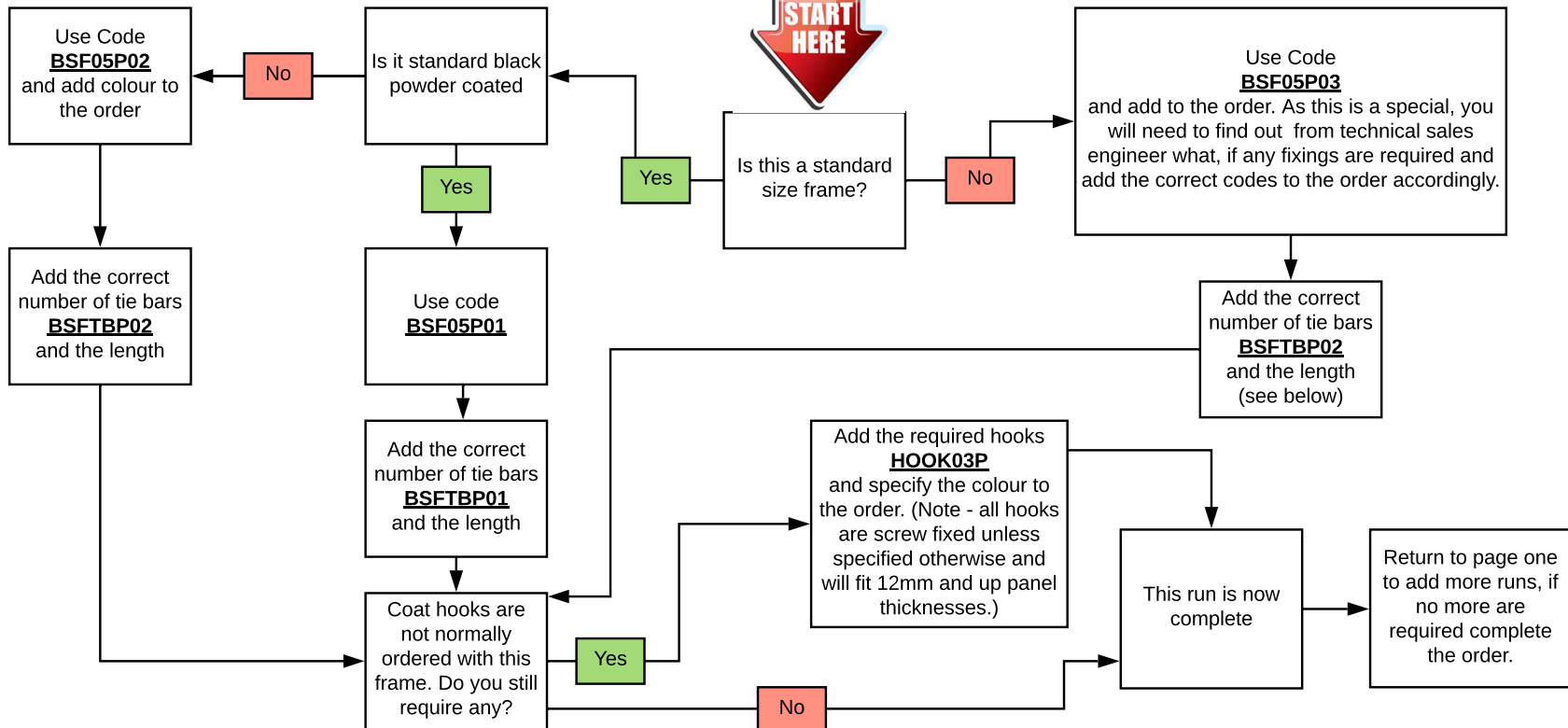
1000

Frames Required  
**2**

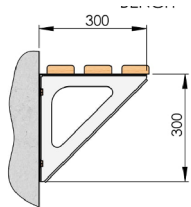
Tie Bars Required  
**1**

Tie Bar Length  
**712 mm**

E-mail: [sales@alm1.co.uk](mailto:sales@alm1.co.uk)   Tel: 01325 313377   [www.almproducts.co.uk](http://www.almproducts.co.uk)



**NOTE - These frames are supplied with fixing down brackets and floor anchors along with all the required screws and bolts to assemble/install complete on site.**



BSF06-CANTILEVER BENCH  
(Stainless Steel)

## BSF06 Cantilever Frame (Stainless Steel)

