



Vol. 21

## A kitchen that knows what matters

At Electrolux, the philosophy is simple: life in the kitchen should be seamless and intuitive.

That's why they've developed a new range with smart, sustainable features and clean lines for an effortless experience. So, you can concentrate on the things that make you happy: making and sharing great food with the people you love.

## Swedish thinking. Better living.



# Cooking Single Ovens



## KOEBP01X

SenseCook Built-in Oven 71  
A+ Stainless Steel

### Features

- Pyrolytic cleaning
- Multifunction combines Ultrafan® fan cooking with other cooking functions, meaning you can choose the best setting to suit your cooking needs
- Ultrafan® Cooking
- Fan controlled defrosting
- Turbo grilling - combines grill and fan for a spit roast effect
- Temperature probe
- Removable door and glass panes for easy cleaning
- Cool door - with 4 glass panes for added safety while you cook
- Child lock for added safety
- 'A' energy class



### Technical info

Cut-out dimensions (mm)  
590 (H) x 560 (W) x 550 (D)

Product dimensions (mm)  
594 (H) x 595 (W) x 567 (D)

**Price €830**



## KOFDP40X

SurroundCook Built-in Oven 71  
A+ Stainless Steel

### Features

- Pyrolytic cleaning
- Multifunction combines Ultrafan® fan cooking with other cooking functions, meaning you can choose the best setting to suit your cooking needs
- Ultrafan® Cooking
- Fan controlled defrosting
- Turbo grilling - combines grill and fan for a spit roast effect
- Retractable oven controls with LED display
- Removable door and glass panes for easy cleaning
- Cool door - with 4 glass panes for added safety while you cook
- Child lock for added safety
- 'A' energy class



### Technical info

Cut-out dimensions (mm)  
590 (H) x 560 (W) x 550 (D)

Product dimensions (mm)  
594 (H) x 595 (W) x 567 (D)

**Price €654**



**KOFEC40X**

SurroundCook Built-in Oven 72  
A Stainless Steel with antifingerprint coating

**Features**

- Built-in oven
- Multifunctional oven with ring heating element
- Oven energy class: A
- Oven cooking functions: Bottom heat, Conventional/ Traditional cooking, Defrost, Grilling, Light, Moist fan baking, Pizza setting, True fan cooking, Turbo grilling
- Oven cavity with 3 baking levels
- Retractable knobs
- Electronic oven functions overview: Acoustic signal, Duration, Minute minder, Time
- Halogen oven lighting
- Catalytic stayclean oven lining
- Easy to clean door
- Cooling fan



**Technical info**

Cut-out dimensions (mm)  
590 (H) x 560 (W) x 550 (D)

Product dimensions (mm)  
594 (H) x 595 (W) x 567 (D)

Price €504



**KOFEC40K**

SurroundCook Built-in Oven 72  
Black Finish

**Features**

- Built-in oven
- Multifunctional oven with ring heating element
- Oven energy class: A
- Oven cooking functions: Bottom heat, Conventional/ Traditional cooking, Defrost, Grilling, Light, Moist fan baking, Pizza setting, True fan cooking, Turbo grilling
- Oven cavity with 3 baking levels
- Retractable knobs
- Electronic oven functions overview: Acoustic signal, Duration, Minute minder, Time
- Halogen oven lighting
- Catalytic stayclean oven lining
- Easy to clean door
- Cooling fan



**Technical info**

Cut-out dimensions (mm)  
590 (H) x 560 (W) x 550 (D)

Product dimensions (mm)  
594 (H) x 595 (W) x 567 (D)

Price €504



**KOFEH40X**

SurroundCook Built-in Oven 71  
A Stainless Steel

**Features**

- Multifunction combines Ultrafan® fan cooking with other cooking functions, meaning you can choose the best setting to suit your cooking needs
- Ultrafan® Cooking
- Fan controlled defrosting
- Turbo grilling - combines grill and fan for a spit roast effect
- Retractable oven controls with LED display
- Smooth enamel interior - easier to clean
- Removable door and glass panes for easy cleaning
- Cool door - with 3 panes of glass for added safety while you cook
- 'A' energy class



**Technical info**

Cut-out dimensions (mm)  
590 (H) x 560 (W) x 550 (D)

Product dimensions (mm)  
594 (H) x 595 (W) x 567 (D)

Price €460



**KOFGH40TX**

SurroundCook Built-in Oven 72  
A Stainless Steel with antifingerprint coating

**Features**

- Multifunction combines Ultrafan® fan cooking with other cooking functions, meaning you can choose the best setting to suit your cooking needs
- Ultrafan® Cooking
- Fan controlled defrosting
- Dual circuit economy variable grill
- Turbo grilling - combines grill and fan for a spit roast effect
- Retractable oven controls with LED display
- Smooth enamel interior - easier to clean
- Removable door and glass panes for easy cleaning
- Cool door - with 2 panes of glass for added safety while you cook
- 'A' energy class



**Technical info**

Cut-out dimensions (mm)  
590 (H) x 560 (W) x 550 (D)

Product dimensions (mm)  
594 (H) x 595 (W) x 567 (D)

Price €444



## Double Oven for flexible cooking

Our Double Oven gives you real kitchen flexibility. With two separate cavities, you can cook two different dishes at once. Host a dinner party with ease, now you can roast succulent joints and bake indulgent deserts at the same time.

# KKS

Kontinental Kitchen Supplies



## KDFCC00X / KDFCC00K

SurroundCook Built-in Oven 39 / 61 Litres  
A Stainless Steel/Also available in Black

### Features

- 'A' energy rating in both ovens for optimum efficiency
- Multifunction in both ovens combines Ultrafan® fan cooking with other cooking functions meaning you can choose the best setting to suit your cooking needs
- Ultrafan® Cooking
- Fan controlled defrosting
- Dual circuit economy variable grill
- Turbo grilling - combines grill and fan for a spit roast effect
- Catalytic cleaning - aids oven cleaning and saves you time
- Removable door and glass panes for easy cleaning
- Cool door - with 3 panes of glass for added safety while you cook
- Fan stops when opening bottom oven door
- Child lock for added safety
- Anti-fingerprint Stainless Steel



### Technical info

Cut-out dimensions (mm)  
875 (H) x 560 (W) x 550 (D)

Product dimensions (mm)  
888 (H) x 594 (W) x 568 (D)

Stainless Steel Price €900      Black Price €900



## KDFEC40X / KDFEC40K

SurroundCook Built-in Oven 42 / 61 Litres  
A Stainless Steel/Also available in Black

### Features

- Double built-in oven
- Multifunctional oven with ring heating element
- Oven energy class: A
- Bottom oven energy class: A
- Top oven cooking functions: Bottom heat, Conventional/Traditional cooking, Defrost, Grilling, Light, Moist fan baking, Pizza setting, True fan cooking, Turbo grilling
- Bottom oven cooking functions: Bottom heat, Conventional/Traditional cooking, Fast grilling, Grilling, Light, Top heat
- Anti fingerprint stainless steel
- Oven cavity with 2 baking levels
- Retractable knobs
- Electronic oven functions overview: Acoustic signal, Duration, Minute minder, Time
- Catalytic stayclean oven lining
- Easy to clean door
- Cooling fan



### Technical info

Cut-out dimensions (mm)  
875 (H) x 560 (W) x 550 (D)

Product dimensions (mm)  
888 (H) x 594 (W) x 568 (D)

Stainless Steel Price €830      Black Price €830



## KDFGE40TX / KDFGE40TK

Built-in Oven 44 / 46Litres  
A Stainless Steel/Also available in Black

### Features

- 'A' energy rating in both ovens for optimum efficiency
- Ultrafan® Cooking
- Fan controlled defrosting
- Retractable oven controls with LED display
- Smooth enamel interior - easier to clean
- Removable door and glass panes for easy cleaning
- Cool door - with 2 panes of glass for added safety while you cook
- Anti-fingerprint Stainless Steel



### Technical info

Cut-out dimensions (mm)  
875 (H) x 560 (W) x 550 (D)

Product dimensions (mm)  
888 (H) x 594 (W) x 568 (D)

Stainless Steel Price €700      Black Price €700



## KDFEC40UX

Undercounter SurroundCook Built-in Oven 42/45 Litres  
A Stainless Steel

### Features

- 'A' energy rating in both ovens for optimum efficiency
- Ultrafan® Cooking
- Fan controlled defrosting
- Turbo grilling - combines grill and fan for a spit roast effect
- Retractable oven controls with LED display
- Catalytic cleaning - aids oven cleaning and saves you time
- Removable door and glass panes for easy cleaning
- Cool door - with 2 panes of glass for added safety while you cook
- Anti-fingerprint Stainless Steel



### Technical info

Cut-out dimensions (mm)  
715 (H) x 594 (W) x 568 (D)

Product dimensions (mm)  
720 (H) x 600 (W) x 550 (D)

Special order only  
Price €900



## Compact built-in range

Create a beautiful kitchen with a range of matching built-in appliances.

### Microwaves

Create various dishes using a microwave with grill function. Or simply heat up your delicious leftovers.

### Warming drawers

Ensure your delicious dishes are ready for serving with one of our warming drawers. They complement our compact built-in appliances beautifully.

# KKS

**Kontinental** Kitchen Supplies





### KVLBE00X

CombiQuick Built-in Oven  
Stainless Steel

#### Features

- Multifunction combines Ultrafan® fan cooking with other cooking functions, meaning you can choose the best setting to suit your cooking needs
- Ultrafan® Cooking
- Fan controlled defrosting
- Turbo grilling - combines grill and fan for a spit roast effect
- Smooth enamel interior - easier to clean
- Removable door and glass panes for easy cleaning
- Cool door - with 3 panes of glass for added safety while you cook
- Child lock for added safety



#### Technical info

Cut-out dimensions (mm)  
450 (H) x 560 (W) x 550 (D)  
Product dimensions (mm)  
455 (H) x 595 (W) x 567 (D)

Price €900



### KMFD264TEX

Built-in Microwave  
Black/Stainless steel with antifingerprint

#### Features

- 800 W quartz grill
- Stainless steel interior
- 24-hour digital clock with auto timer
- Fast programming
- Grill cooking
- Fast, efficient microwave cooking
- Auto weight defrosting programmes
- Crunch pizza function
- Quartz grill
- 26 litre capacity
- Audible cooking end signal
- Rectangular grill rack
- Finger print proof stainless steel
- Combi microwave oven and grill



#### Technical info

Cut-out dimensions (mm)  
450 (H) x 562 (W) x 500 (D)  
Product dimensions (mm)  
459 (H) x 594 (W) x 404 (D)

Price €529



### KMFE172TEX

Built-in Microwave  
Black/Stainless steel with antifingerprint

#### Features

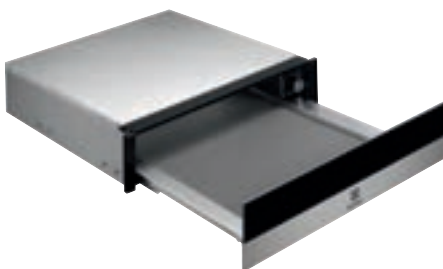
- Active' display provides cooking guidance through animation and allows cooking adjustments without interrupting the programme, making cooking easier
- Microwave power: 800 Watt, 5 levels
- Audible cooking end signal
- Child lock - for safety
- 17 litre capacity



#### Technical info

Cut-out dimensions (mm)  
360 (H) x 562 (W) x 300 (D)  
Product dimensions (mm)  
371 (H) x 594 (W) x 316 (D)

Price €485



### EBD4X

Warming Drawer Built-in with  
antifingerprint coating

#### Features

- Anti fingerprint stainless steel
- 2 heat settings
- On/off switch with LED lamp
- Anti-slip mat
- Adjustable thermostat rotary control
- Crockery warming
- Defrost
- Food Warming
- Proving Dough



#### Technical info

Cut-out dimensions (mm)  
140 (H) x 560 (W) x 550 (D)  
Product dimensions (mm)  
140 (H) x 594 (W) x 535 (D)

Price €474



## Induction Hobs

Induction technology means that heat is delivered quickly, so water boils faster than ever and to precisely the right spot, meaning the surrounding areas remain cool and safe. It also reacts instantly to temperature changes, responding instantly when you lower the heat, giving you total control. And the smooth surface makes it easy to clean.



**EIT815**  
80cm Induction Hob 5 Zones

**Features**

- Bevelled sides for a sleek flush finish in the kitchen
- Auto heat up function
- Individual timers
- Child safety control lock
- Auto safety switch off
- Touch controls
- Hob2Hood® function



**Technical info**

Cut-out dimensions (mm)  
750 (W) x 490 (D)  
Product dimensions (mm)  
780 (W) x 520 (D)

**Price €799**



**KIV834**  
80cm Induction Bridge Hob 4 Zones

**Features**

- Bevelled sides for a sleek flush finish in the kitchen
- Auto heat up function
- Individual timers
- Child safety control lock
- Auto safety switch off
- Touch controls
- Hob2Hood® function
- Bridge function



**Technical info**

Cut-out dimensions (mm)  
750 (W) x 490 (D)  
Product dimensions (mm)  
780 (W) x 520 (D)

**Price €715**



**KIV644**  
60cm MultipleBridge Induction Hob 4 Zones

**Features**

- Bevelled sides for a sleek flush finish in the kitchen
- Auto heat up function
- Individual timers
- Child safety control lock
- Touch controls
- DoubleBridge function
- PowerBoost function



**Technical info**

Cut-out dimensions (mm)  
560 (W) x 490 (D)  
Product dimensions (mm)  
590 (W) x 520 (D)

**Price €585**



**LIT604**  
60cm Induction Hob 4 Zones

**Features**

- Bevelled sides for a sleek flush finish in the kitchen
- Auto heat up function
- Individual timers
- Child safety control lock
- Auto safety switch off
- Touch controls
- Hob2Hood® function
- PowerBoost function



**Technical info**

Cut-out dimensions (mm)  
560 (W) x 490 (D)  
Product dimensions (mm)  
590 (W) x 520 (D)

**Price €529**



## Ceramic Hobs

**The versatility to install your  
hob anywhere you want to**

Because this hob is independent, you have way more flexibility to install it wherever you want to. Choose the location that suits your cooking style.

## Gas Hobs

**Finely-tuned flame**

Take control of your hob with our responsive gas taps. They enable you to easily adjust the level of the flame so that you can always cook over the right heat.

# KKS

**Kontinental** Kitchen Supplies

## Cooking Ceramic Hobs



### EHF6241FOK

60cm Touch Control Ceramic Hob 4 Zones

#### Features

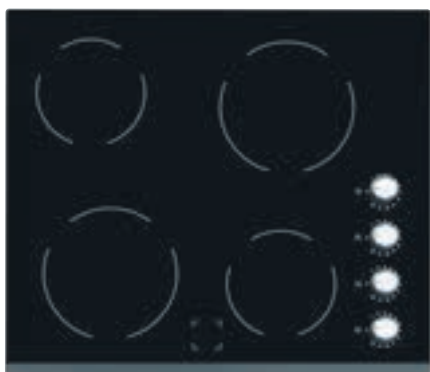
- Bevelled sides for a sleek flush finish in the kitchen
- Residual heat indicators
- Child safety control lock
- Auto safety switch off
- Ceramic surface - easy to clean



#### Technical info

Cut-out dimensions (mm)  
560 (W) x 490 (D)  
Product dimensions (mm)  
590 (W) x 520 (D)

Price €415



### EHF6140ISK

60cm Built-in Ceramic Hob Control Knobs

#### Features

- Residual heat indicators
- Side rotary controls
- Rotary controls
- Ceramic surface - easy to clean



#### Technical info

Cut-out dimensions (mm)  
560 (W) x 490 (D)  
Product dimensions (mm)  
590 (W) x 520 (D)

Price €299

## Cooking Gas Hobs



### KGS7536X

75cm Built-in Gas Hob

#### Features

- Automatic integrated ignition
- Easy to reach front rotary controls
- Safety gas cut off using thermocouples
- 3 stylish cast iron pan supports
- Stylishly one-piece hob surface for easy cleaning
- New flat design
- 2 Semi Rapid Burner
- 1 Multi Crown Burner
- 1 Rapid Burner
- 1 Auxiliary Burner



#### Technical info

Cut-out dimensions (mm)  
560 (W) x 480 (D)  
Product dimensions (mm)  
744 (W) x 510 (D)

Price €429



### KGS6436X

60cm Built-in Gas Hob

#### Features

- Automatic integrated ignition
- Easy to reach front rotary controls
- Safety gas cut off using thermocouples
- 2 stylish cast iron pan supports
- Stylish one-piece hob surface for easy cleaning
- New flat design
- 2 Semi Rapid Burner
- 1 Multi Crown Burner
- 1 Auxiliary Burner



#### Technical info

Cut-out dimensions (mm)  
560 (W) x 480 (D)  
Product dimensions (mm)  
595 (W) x 510 (D)

Price €299

## Cooling Built-in Refrigerators and Freezers



### **Built-in Refrigerator**

Pack in an entire week's shopping in a spacious, statement fridge.

### **Consistently cool, with DynamicAir**

DynamicAir makes sure that the environment inside your fridge is kept at a stable temperature. It works by circulating cool air throughout, meaning that even when the door is opened, your food is protected from heating up.

### **Built-in Freezer**

Organise your frozen produce and easily find what you need, and never defrost again with our frost-free model.

### **NoFrost, forever**

Our NoFrost technology prevents ice from building up in the freezer, so you never have to defrost it again. Making it more hygienic and easier to clean, while giving you extra room to store the ingredients that you love.

# **KKS**

**Kontinental** Kitchen Supplies



## LRB2DF18C

Built-in Refrigerator 176.9cm F



### Features

- For fully integrated, door-on-door installation
- 314 litre gross fridge capacity
- Extremely silent: only 35 dB
- Automatic defrosting of the cooling compartment
- Holiday function to minimize energy consumption during long absence avoiding mould and bad odours
- Shopping function quickly assures the desired refrigeration temperature
- Intensive cooling with auto switch off - for fast chilling of fresh food
- Electronic touch controls with digital indications
- TasteGuard filter
- Audible & visual open door warning signal
- Refrigerator shelves: 4 Full Width + 1Flexi shelf, Glass full width with front and rear trim
- 3 full width door shelves
- 1 full width covered dairy compartment
- Bottle shelf with holder
- Egg tray: 2 for 6 eggs
- Refrigerator lighting: 1, Integrated to FanHigh, Internal. LED, With rise-on effect
- Refrigerator colour/design: White
- Door hinges placement: Right & Reversible
- 1780 mm built-in height
- Fan air circulation for even temperature throughout the fridge
- Soft-closing door solution

### Technical info

**Built in dimensions (mm)**  
1780 (H) x 560 (W) x 550 (D)

**Product dimensions (mm)**  
1769 (H) x 556 (W) x 549 (D)

**Price €864**



## LUT6NF18C

Frost Free Built-in Upright Freezer 176.9 cm F



### Features

- For fully integrated, door-on-door installation
- 216 litres gross capacity
- Electronic touch controls with digital indications
- Frost-free technology
- FrostFree freezer with automatic defrosting
- Door hinges placement: Right & Reversible
- Freezer drawers: 5 Full Width, Transparent Plastic
- Freezer flap(s): 2, Transparent Plastic
- Fast Freeze function with auto return to normal settings
- Audible and visual warning signal for high temperature
- Audible and visual warning signal for open door
- Fast freeze function with automatic return to normal
- 4 star freezer
- Noise level: only 39 dB
- Other internal features: 2 Accumulators
- Freezer colour/design: White
- 1780 mm built-in height

### Technical info

**Built in dimensions (mm)**  
1780 (H) x 560 (W) x 550 (D)

**Product dimensions (mm)**  
1769 (H) x 556 (W) x 549 (D)

**Price €920**

## Cooling Built-in Fridge Freezers



### Frost Free Built-in Fridge Freezer

TwinTech® No Frost fridge-freezer protects food quality. Intelligent technology with two independent cooling systems and No Frost freezer.

Superior No Frost systems, humidity is kept ideal in the fridge, preventing food from drying out. 60% less mass loss, with TwinTech® No Frost.

### Low Frost Built-in Fridge Freezer

40% faster cool down with ColdSense. Fridge and room temperature sensors react quickly to environment changes, maintaining a stable temperature. A fast cool down is secured and the right temperature is quickly adjusted. Less temperature shocks, protecting the textures in each delicious fruit.

# KKS

Kontinental Kitchen Supplies





## LNT7NF18S5

50:50 Frost Free Built-in Fridge Freezer 177.2 cm F



### Features

- Fridge capacity (gross): 157 litres
- Freezer capacity (gross): 107 litres
- Frost free
- Automatic defrost in fridge
- Adjustable temperature control
- Intensive cooling with auto switch off - for fast chilling of fresh food
- 1 half width sliding door shelf
- 2 full width door shelves including bottle shelf
- 1 full width covered dairy compartment
- Flexi shelf
- Child proof control panel
- Reversible door hinge
- Premium LED fridge lighting

### Technical info

**Built in dimensions (mm)**  
1780 (H) x 560 (W) x 550 (D)

**Product dimensions (mm)**  
1772 (H) x 548 (W) x 549 (D)

**Price €920**



## LNT7TF18S

70:30 Frost Free Built-in Fridge Freezer 177.2 cm F



### Features

- Fridge capacity (gross): 196 litres
- Freezer capacity (gross): 76 litres
- Frost free
- Automatic defrost in fridge
- Adjustable temperature control
- Intensive cooling with auto switch off - for fast chilling of fresh food
- 1 half width sliding door shelf
- 3 full width door shelves including bottle shelf
- 1 full width covered dairy compartment
- Flexi shelf
- Child proof control panel
- Reversible door hinge
- Premium LED fridge lighting

### Technical info

**Built in dimensions (mm)**  
1780 (H) x 560 (W) x 550 (D)

**Product dimensions (mm)**  
1772 (H) x 548 (W) x 549 (D)

**Price €699**



## LNT3LF18S5

50:50 Static Low Frost Built-in Fridge Freezer 177.2 cm F



### Features

- Fridge capacity (gross): 163 litres
- Freezer capacity (gross): 106 litres
- Automatic defrost in fridge
- Adjustable temperature control
- 1 half width sliding door shelf
- 2 full width door shelves including bottle shelf
- 1 full width covered dairy compartment
- 4 star freezer
- 3 freezer shelves
- Reversible door hinge

### Technical info

**Built in dimensions (mm)**  
1780 (H) x 560 (W) x 550 (D)

**Product dimensions (mm)**  
1772 (H) x 548 (W) x 549 (D)

**Price €640**



## LNT3LF18S

70:30 Static Low Frost Built-in Fridge Freezer 177.2 cm F



### Features

- Fridge capacity (gross): 199 litres
- Freezer capacity (gross): 73 litres
- Automatic defrost in fridge
- Adjustable temperature control
- 3 full width door shelves including bottle shelf
- 1 full width covered dairy compartment
- 4 star freezer
- 3 freezer drawers
- Reversible door hinge

### Technical info

**Built in dimensions (mm)**  
1780 (H) x 560 (W) x 550 (D)

**Product dimensions (mm)**  
1772 (H) x 548 (W) x 549 (D)

**Price €640**

## Cooling Built-in Undercounter Refrigerator and Freezer



### Undercounter Integrated Freezer

No Frost technology prevents ice from building up in the freezer, so you never have to defrost it again. Making it more hygienic and easier to clean, while giving you extra room to store the ingredients that you love.

### Undercounter Integrated Refrigerator

The 300 OptiSpace Refrigerator offers a spacious interior for groceries. Storage options make finding a spot for larger items simple. And if you need even more room, the drawers can be easily removed.

# KKS

Kontinental Kitchen Supplies



**LYB3NF82R**

Frost Free Built-in Upright Freezer 81.5 cm F



**Features**

- 86 litres gross capacity
- Frost-free technology
- 4 star freezer
- Fast freeze function with automatic reset
- Visible and accoustic high temperature alarm
- 3 large capacity freezer drawers
- Transparent freezer drawers
- Reversible door

**Technical info**

Built in dimensions (mm)  
820 (H) x 600 (W) x 550 (D)

Product dimensions (mm)  
815 (H) x 596 (W) x 550 (D)

**Price €654**



**LXB3AF82R**

Built-in Refrigerator 81.9 cm F



**Features**

- 136 litre gross fridge capacity
- Auto fridge defrost
- 2 full and 2 half depth glass shelves
- 1 full width covered dairy compartment
- Bottle shelf with holder
- LED Bulb
- 1 extra large salad drawer
- Reversible door

**Technical info**

Built in dimensions (mm)  
820 (H) x 600 (W) x 550 (D)

Product dimensions (mm)  
819 (H) x 596 (W) x 547 (D)

**Price €654**

# Cleaning Fully Integrated Dishwashers



## Easy installation, PerfectFit

With PerfectFit Sliding Hinges, it's never been easier to install your new dishwasher. The hinges accommodate all niche machine heights and even remove the need to cut the plinth. You can be confident that your machine will fit into your kitchen perfectly.

## Three-times better drying with AirDry

The new AirDry technology uses natural airflow to finish drying, for up to three-times better performance compared to closed-door systems. The door opens 10cm towards the end of the cycle, letting air circulate for superb drying results.



## KEQB7300L

AirDry Technology Full Width 60cm 13 settings D

### Features

- FlexiSpray arm, with its clever double rotating action for excellent cleaning results
- Height adjustable upper basket
- Floor beam to update you on wash status
- 8 programmes -
  - 160 Minutes
  - 60 Minutes
  - 90 Minutes
  - AUTO Sense
  - Eco
  - Machine Care
  - Quick 30 Minutes
  - Rinse & Hold
- 4 temperatures
- ExtraHygiene
- GlassCare
- XtraPower
- Up to 24 hour time delay
- 11 litres - more economical than washing by hand



### Technical info

**Built in dimensions (mm)**  
820-900 (H) x 600 (W) x 570 (D)

**Product dimensions (mm)**  
818 (H) x 596 (W) x 550 (D)

**Price €649**



## KESC7311L

AirDry Technology Full Width 60cm 13 settings D

### Features

- FlexiSpray arm, with its clever double rotating action for excellent cleaning results
- Height adjustable upper basket
- Floor beam to update you on wash status
- 8 programmes -
  - 160 Minutes
  - 60 Minutes
  - 90 Minutes
  - AUTO Sense
  - Eco
  - Machine Care
  - Quick 30 Minutes
  - Rinse & Hold
- 4 temperatures
- GlassCare
- XtraPower
- Up to 24 hour time delay
- 10.5 litres - more economical than washing by hand



### Technical info

**Built in dimensions (mm)**  
820-900 (H) x 600 (W) x 570 (D)

**Product dimensions (mm)**  
818 (H) x 596 (W) x 550 (D)

**Price €584**



## KEAF7200L

AirDry Technology Full Width 60cm 13 settings E

### Features

- Height adjustable upper basket
- 3 hours delay start
- 5 programmes -
  - 160 Minutes
  - 90 Minutes
  - Eco
  - Quick 30 Minutes
  - Rinse & Hold
- 9.9 litres - more economical than washing by hand



### Technical info

**Built in dimensions (mm)**  
820-900 (H) x 600 (W) x 570 (D)

**Product dimensions (mm)**  
818 (H) x 596 (W) x 550 (D)

**Price €500**



## EEA22100L

AirDry Technology Slim 45cm 9 settings F

### Features

- Height adjustable upper basket
- 6 programmes -
  - 90 Minutes
  - AUTO Sense
  - Eco
  - Machine Care
  - Quick 30 Minutes
  - Rinse & Hold
- 3 temperatures
- 3 hours delay start
- 9.9 litres - more economical than washing by hand



### Technical info

**Built in dimensions (mm)**  
820-900 (H) x 450 (W) x 570 (D)

**Product dimensions (mm)**  
818 (H) x 446 (W) x 550 (D)

**Price €564**

# Washing Integrated Washing Machines & Washer Dryer



## Smoother results with SteamCare

Our SteamCare System ends each wash with steam to reduce wrinkles by a third. Achieving a smooth finish without the heat of regular ironing.

## Enjoy a peaceful home with our quiet washer dryer

Washer dryers from Electrolux are designed to perform quietly. This means that you can run a cycle while maintaining a calm and comfortable environment.

# KKS

**Kontinental** Kitchen Supplies



### E774F402BI

PerfectCare Washing Machine Eco Valve  
7kg 1351rpm, F

#### Features

- Aqualux washing technology - traditional washing for good results with all fabric types
- Maximum spin speed: 1400 rpm
- Spin reduction option - your choice of 500/700/900/1400 rpm
- Programs - Eco 40-60, Cottons, Synthetics, Delicates, Anti Allergy, Steam, Spin/Drain, Rinse, Duvet, Rapid 14min, Sports Wear, OutDoor, Denim, Wool\Silk
- Fully integrated design - appliance blends into kitchen design behind cabinet door
- Water connection - cold fill
- B class spin drying performance



#### Technical info

Product dimensions (mm)  
819 (H) x 596 (W) x 540 (D)

Price €754

## Washing Integrated Washer Dryer



### E776W402BI

PerfectCare Washing Dryer 7kg 1600rpm, E

#### Features

- Aqualux washing technology - traditional washing for good results with all fabric types
- Washing capacity: 7 kg
- Maximum spin speed: 1600 rpm
- Spin reduction option - your choice of 500/700/900/1600 rpm
- Drying capacity: 4 kg
- Programs - Eco 40-60, Cottons, Synthetics, Delicates, Wool, Steam, Spin/Drain, Rinse, Machine Clean, Anti Allergy, Sports Wear, OutDoor, Denim, One GO 1h 1Kg
- Large porthole with wide door opening - for easy loading
- Condenser dryer, no venting required
- Fully integrated design - appliance blends into kitchen design behind cabinet door
- Water connection - cold fill
- A class wash performance



#### Technical info

Product dimensions (mm)  
820 (H) x 596 (W) x 544 (D)

Price €854

Other great brands supplied by KKS

# AEG

Premium Kitchen Appliances



# BOSCH

Invented for life

Premium Kitchen Appliances



# Electrolux

Quality Kitchen Appliances



Premium Kitchen Appliances and  
Sinks & Taps



Quality Cooker Hoods

# ZANUSSI

Kitchen Appliances

# KKS

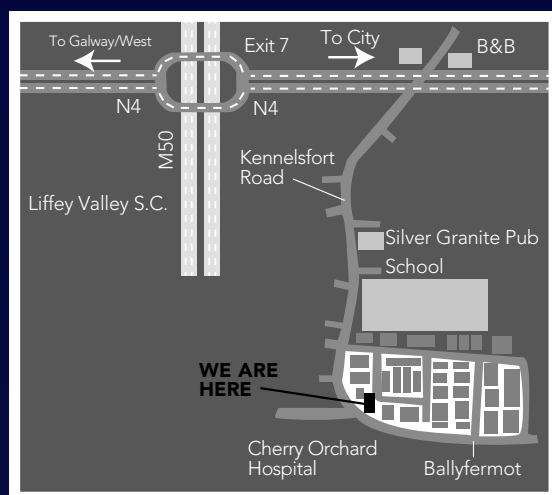
Kontinental Kitchen Supplies

Cucina Limited  
T/A Kontinental Kitchen Supplies  
Unit 85 , Cherry Orchard Industrial Estate  
Dublin 10, D10 DH39

Tel 01 6262314  
Fax 01 6262416

sales@kks.ie  
www.kks.ie

GPS: 53° 20' 42" N, 6° 22' 42" W



This brochure is correct at time of going to print.  
The colours and texture of our products are reproduced as accurately as possible  
within the limits of the printing process. Your statutory rights are not affected. E&OE.  
Designed and printed by T. Cassidy Printing.